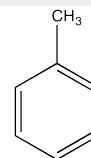


**Identification**

C<sub>7</sub>H<sub>8</sub>  
 M = 92,14 g/mol  
 CAS [108-88-3]  
 EC number: 203-625-9  
 Taric code: 2902 30 00


**Synonyms**

Methylbenzene, Phenylmethane








**Applications**

synthesis of organic products, solvents, as gasoline additive.

**Specifications**

assay (G.C.).....	min. 99,9 %	nickel (Ni).....	max. 0,000002 %
identity (IR-spectrum).....	passes test	platinum (Pt).....	max. 0,000002 %
density (20°/4°).....	0,864 - 0,868	silver (Ag).....	max. 0,000002 %
appearance.....	clear	thallium (Tl).....	max. 0,000005 %
colour (Hazen).....	max. 10	tin (Sn).....	max. 0,00001 %
acidity.....	max. 0,0002 meq/g	titanium (Ti).....	max. 0,000005 %
alkalinity.....	max. 0,0002 meq/g	vanadium (V).....	max. 0,000005 %
chlorides (Cl).....	max. 0,00005 %	zinc (Zn).....	max. 0,000001 %
sulfates (SO <sub>4</sub> ).....	max. 0,0001 %	zirconium (Zr).....	max. 0,000002 %
aluminium (Al).....	max. 0,00001 %	benzene (G.C.).....	max. 0,05 %
antimony (Sb).....	max. 0,000002 %	sulfur compounds (as S).....	max. 0,003 %
arsenic (As).....	max. 0,000002 %	tiophene (C <sub>4</sub> H <sub>4</sub> S).....	max. 0,0001 %
barium (Ba).....	max. 0,000001 %	substances darkened by H <sub>2</sub> SO <sub>4</sub> .....	passes test
beryllium (Be).....	max. 0,000002 %	residue on evaporation.....	max. 0,0002 %
bismuth (Bi).....	max. 0,00001 %	water (K.F.).....	max. 0,02 %
boron (B).....	max. 0,000002 %		
cadmium (Cd).....	max. 0,000001 %	liquid chromatography suitability	
calcium (Ca).....	max. 0,00003 %	absorbance.....	passes test
chromium (Cr).....	max. 0,000002 %		
cobalt (Co).....	max. 0,000002 %	min. transmission/max. absorbance	
copper (Cu).....	max. 0,000002 %	in a 1,0 cm cell at	
gallium (Ga).....	max. 0,000002 %	wavelength:	
gold (Au).....	max. 0,00001 %	285 nm.....	T(%) A (AU)
indium (In).....	max. 0,000002 %	292 nm.....	10 % 1,000 AU
iron (Fe).....	max. 0,00001 %	305 nm.....	50 % 0,301 AU
lead (Pb).....	max. 0,00001 %	317 nm.....	80 % 0,097 AU
lithium (Li).....	max. 0,000002 %	350 nm.....	90 % 0,046 AU
magnesium (Mg).....	max. 0,00001 %		98 % 0,009 AU
manganese (Mn).....	max. 0,000001 %		
molybdenum (Mo).....	max. 0,000005 %	Microfiltered through membranes	
		of pore diameter 0,22 µm	

**Packaging**
**Packaging Code**

1 |  TO00851000  
 2,5 |  TO00852500  
 4 |  TO00854000  
 5 |  TO0085005M  
 7 |  TO0085007E  
 20 |  TO0085020S  
 25 |  TO0085025S

**Physical data**

- Density: 0,87 g/cm<sup>3</sup>
- Solub. in water: (20 °C): 0,52 g/l
- Melting point: -95 °C
- Boiling point: 111 °C
- Flash point: 4 °C
- Ignition temperature: 535 °C
- Vapour pressure: (20 °C) 29 hPa
- Viscosity: (20 °C) 0,58 mPas
- Dipolar moment: (20 °C) 0,36 Debye
- Dielectric const.: (25 °C) 2,3
- Saturation conc.: (20 °C) 110 g/m<sup>3</sup>
- Expl. limit (upper): 8 Vol%
- Expl. limit (lower): 1,2 Vol%

**Safety - GHS**

Signal Word: Danger

**Hazard Statements:**

H225: Highly flammable liquid and vapour.  
H304: May be fatal if swallowed and enters airways.  
H361d: Suspected of damaging the unborn child.  
H373: May cause damage to organs through prolonged or repeated exposure.  
H315: Causes skin irritation.  
H336: May cause drowsiness or dizziness.

**Precautionary Statements:**

P210: Keep away from heat / sparks / open flames / hot surfaces. - No smoking.  
P241: Use explosion-proof electrical / ventilating / lighting / equipment.  
P260: Do not breathe dust / fume / gas / mist / vapours / spray.  
P303+P361+P353: IF ON SKIN (or hair): Remove / Take off immediately all contaminated clothing. Rinse skin with water / shower.  
P405: Store locked up.  
P501a: Dispose of contents / container in accordance with local / regional / national / international regulations.

**Toxicological data**

- LD 50 (oral, rat): 636 mg/kg
- MAK: 50 ml/m<sup>3</sup>, 190 mg/m<sup>3</sup>
- WGK: 2
- Poison class CH (Swiss): 4

**Transport/storage**

- ADR: 3 F1 II • UN 1294 • TOLUENE
- IMDG: 3 II • UN 1294 • TOLUENE
- IATA/ICAO: 3 II • UN 1294 • TOLUENE
- PAX: 305
- CAO: 307