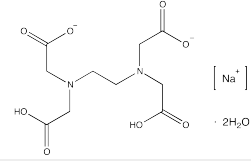


Ethylenediaminetetraacetic acid, EDTA, disodium salt, dihydrate,
 reagent grade, ACS, Reag. Ph Eur

Identification

$C_{10}H_{14}N_2Na_2O_8 \cdot 2H_2O$
 M = 372,24 g/mol
 CAS [6381-92-6]
 EC number: 205-358-3
 Taric code: 2922 49 95


Synonyms

Edetic acid disodium salt, Disodium dihydrogen ethylenediaminetetraacetate




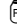


Applications

analytical chemistry, sequestering agent.

Specifications

assay (complexometric).....	99 - 101 %	sulfates (SO ₄)	max. 0,01 %
identity.....	passes test	calcium (Ca).....	max. 0,001 %
insoluble in water.....	max. 0,003 %	copper (Cu).....	max. 0,0001 %
appearance.....	white, crystalline powder	heavy metals (as Pb).....	max. 0,0005 %
insoluble in diluted ammonium hydroxide	max. 0,005 %	iron (Fe).....	max. 0,0005 %
pH (5 %, H ₂ O, 20 °C).....	4,0 - 5,0	lead (Pb).....	max. 0,001 %
chlorides (Cl).....	max. 0,004 %	magnesium (Mg).....	max. 0,0005 %
cyanides (CN).....	max. 0,001 %	nitriiotriacetic acid [(HOCOCH ₄) ₃ N].....	max. 0,05 %
		loss on drying (150°C, 6 h).....	8,7 - 11,4 %
		residue on ignition.....	max. 0,2 %

Packaging
Packaging Code

100 g  AC09650100
 250 g  AC09650250
 500 g  AC09650500
 1 kg  AC09651000
 5 kg  AC0965005P
 25 kg  AC0965025P

Physical data

- Appearance: powder, white
- Bulk density: ~ 400 - 500 kg/m³
- Solub. in water: (20 °C): 100 g/l
- Melting point: 252 °C (decomposes)
- pH(50 g/l H₂O, 20 °C) 4 - 5

Safety - GHS

Signal Word: Warning

Hazard Statements:

H302: Harmful if swallowed.


Precautionary Statements:

- P264: Wash thoroughly after handling.
 P270: Do not eat, drink or smoke when using this product.
 P330: Rinse mouth.
 P301+P312: IF SWALLOWED: Call a POISON CENTER or doctor/physician if you feel unwell.
 P501a: Dispose of contents / container in accordance with local / regional / national / international regulations.

Toxicological data

- LD 50 (oral, rat): 2000 mg/kg
- WGK: 2
- Poison class CH (Swiss): 4

Transport/storage

- Store between 15°C and 25°C